

MONTHLY MEMBERSHIP PROGRESS REPORT

LOCATION INDIANA

District 25 E

Results as of: 4/30/2023

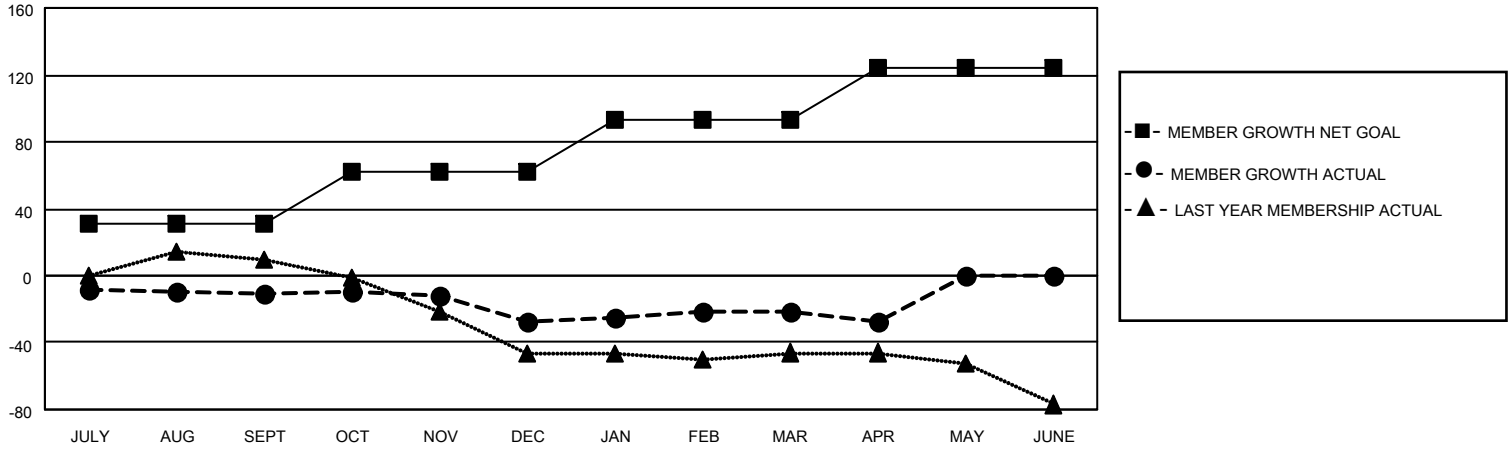
Clubs			
RESULTS FOR 2022-2023			
QUARTER	NEW CLUB GOAL	NEW CLUBS	DROPPED CLUBS
JULY/AUG/SEPT	0	0	0
OCT/NOV/DEC	1	0	0
JAN/FEB/MAR	0	0	0
APR/MAY/JUNE	0	0	0

Members			
RESULTS FOR 2022-2023			
QUARTER	MEMBER GROWTH NET GOAL	MEMBER GROWTH ACTUAL	DROPPED MEMBERS ACTUAL (including transfers)
JULY/AUG/SEPT	31	24	33
OCT/NOV/DEC	31	13	28
JAN/FEB/MAR	31	29	24
APR/MAY/JUNE	31	9	11

GOALS AND ACTUAL NEW CLUBS CUMULATIVE



GOALS AND ACTUAL MEMBERS CUMULATIVE



DROPPED CLUBS: 0

24 CLUBS OF 53 ADDED 1 OR MORE NEW MEMBERS

GENDER DISTRIBUTION

MALE	766 (63.46%)
FEMALE	441 (36.54%)
NON BINARY	0 (0.00%)
PREFER NOT TO ANSWER	0 (0.00%)

DROPPED MEMBERS

[CLICK HERE FOR CUMULATIVE MEMBERSHIP DATA](#)

DECEASED	24
CLUB CANCELLED	0
OTHER	72
TOTAL	96

TOTAL FAMILY UNIT MEMBERS	448
FAMILY MEMBERS PAYING HALF DUES	228